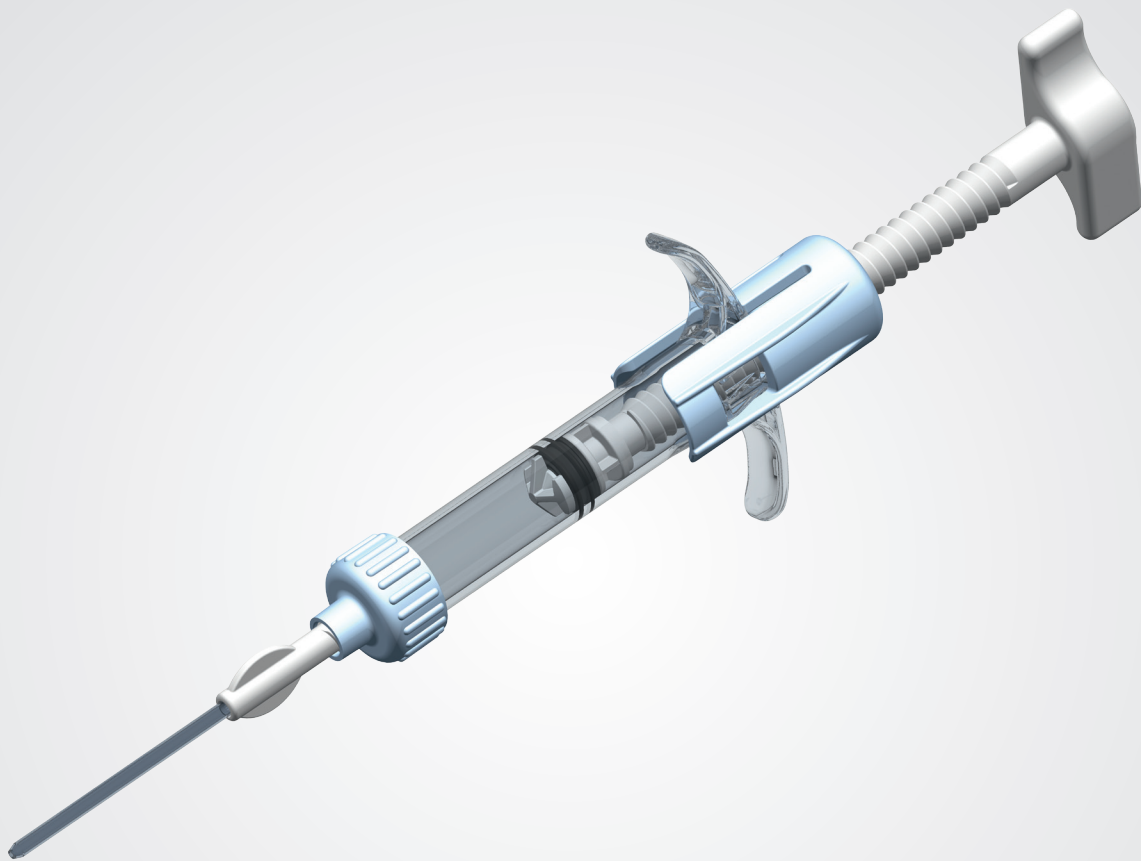


Bone-Cement Delivery System

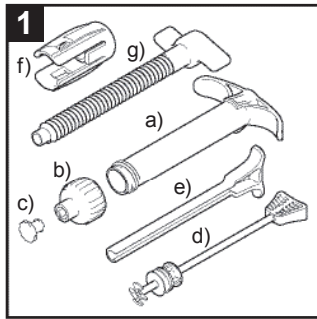
Operating Instruction (using spindle drive)



The right mix

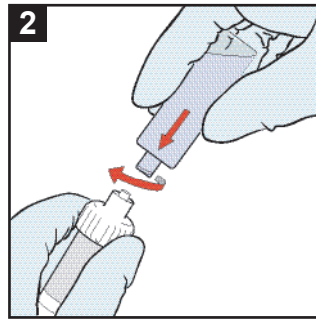
Bone-Cement Delivery System

Operating Instruction (using spindle drive)



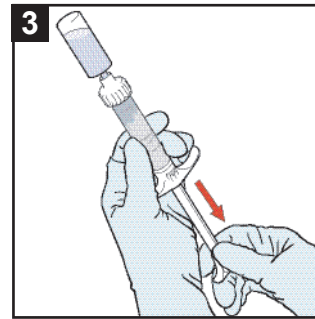
Step 1:

- a) Syringe
- b) Syringe cap
- c) Luer-cap
- d) Mixing device
- e) Plunger
- f) Spindle nut
- g) Spindle



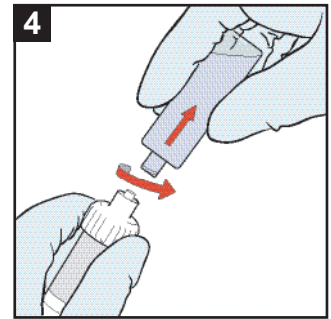
Step 2:

Remove the luer-cap from the syringe cap. Attach the container with liquid by turning the container clockwise onto the syringe cap.



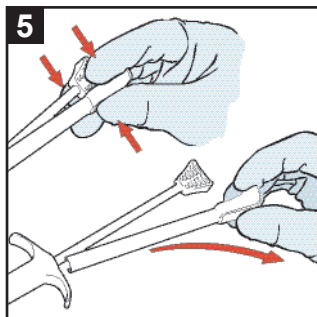
Step 3:

Aspirate the liquid from the container by pulling the plunger. Repeat if necessary.



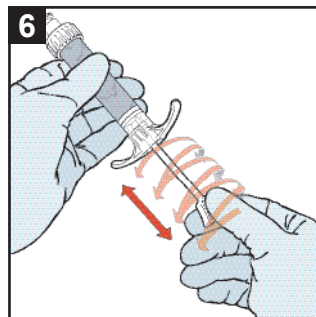
Step 4:

Remove the container by turning counter clock-wise while fixing the syringe cap with two fingers. Close syringe by attaching the luer-cap to the syringe cap.



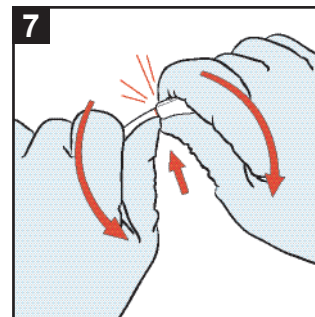
Step 5:

Remove the plunger sleeve from the mixing device by pushing the handle with the thumb and two fingers.



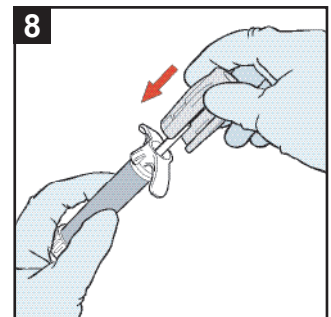
Step 6:

Mix the biomaterial by moving the mixing device back and forth while simultaneously rotating. Be sure to mix the material at both very ends of the syringe.



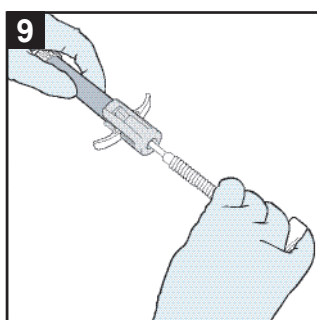
Step 7:

Break off mixing grip.



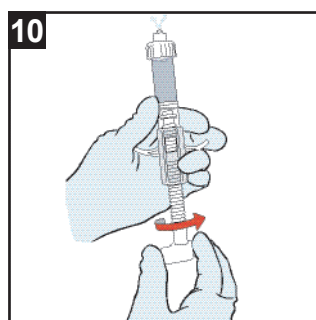
Step 8:

Attach the spindle nut to the back end of the syringe. Be aware of hearing two clicks while attaching both sides of the spindle nut.



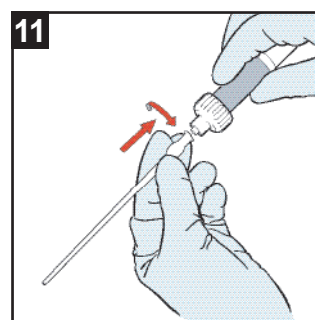
Step 9:

Rotate the spindle clockwise while attaching it to the spindle nut.



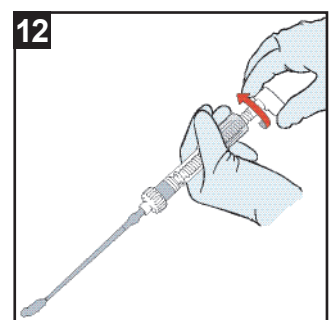
Step 10:

To vent air slowly rotate spindle until all air is removed.



Step 11:

Attach accessory to the syringe.



Step 12:

Rotate spindle to dispense mixed biomaterial.